



24-HOUR ROADSIDE ASSISTANCE SERVICE AT YOUR FINGERTIPS:

☎ 1800-88-8733 or 03-79890352

🌐 www.aia.com.my/roadsideAssist

SCAN HERE



If your car suffers a mechanical breakdown or an accident, help is on the way with just one call or scan the QR code for easy access to the Roadside Assist website. A range of value-added services are provided to assist you.


Note:


Visit www.aia.com.my/motorClaimGuide/ to view the Claim Guides and Frequently Asked Questions.


Benefits at a glance:


AIA ROADSIDE ASSIST
24-hour Service Hotline
 1800 88 8733 / 03-7989 0352
www.aia.com.my/roadsideAssist


24-HOUR ROADSIDE REPAIR SERVICES



 Change of punctured tyres


 Battery replacement

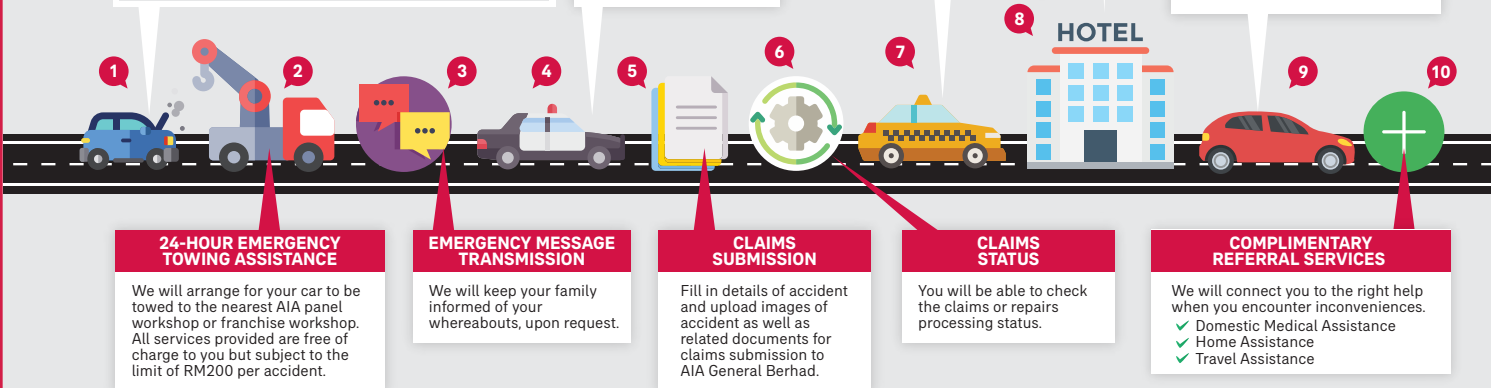

 Jumpstart


 Fuel refill


 Minor mechanical and electrical failure


 Road Accident Claims Submission and Claims Status Updates

Services come with free labour of up to RM300 per event, including towing assistance.



Notes:

- Territorial Limits – Roadside Repair Services and Towing Assistance are available anywhere in Peninsular Malaysia excluding any islands (except for Langkawi and Penang). For East Malaysia, such services are available within a radius of 25 km from the city center of Kota Kinabalu, Sandakan, Tawau, Labuan, Sibulintulu, Miri, Kuching and along Pan Borneo Highway.
- Any cost incurred for toll charges, spare parts, batteries or petrol required during the breakdown assistance will be borne by you.
- For the referral services above, the actual cost incurred for the service provided shall be borne by you. The referral services are provided by a third party service provider and the continuation of these services are not guaranteed.
- Service(s) is/are received at your own risk.

AIA Roadside Assist will not be provided for the following circumstances:

1. The vehicle is driven by person without a valid license, under the influence of drugs and/or alcohol;
2. The vehicle does not have a valid road tax;
3. The vehicle is or has been modified for participation in motor rally and racing, or has been modified in contravention of any laws and/or regulations or being used for any unlawful or illegal purpose;
4. The vehicle is a commercial vehicle;
5. The vehicle is immobilised outside the territorial limits;
6. The vehicle is immobilised because the keys are not available or are locked inside the car;
7. The mechanical part in the vehicle, such as engine or transmission, has been removed or that the vehicle has been dismantled fully or partly in a workshop;
8. The vehicle is at a location where there is an intended or on-going strike, riot or civil commotion as published / announced via the mass media;
9. Towing of vehicle for the purpose of disposing the vehicle, transferring it from one workshop to another, or after it has been sent for a spray job; and
10. A stolen vehicle which has been discovered or an abandoned vehicle which has been vandalised.